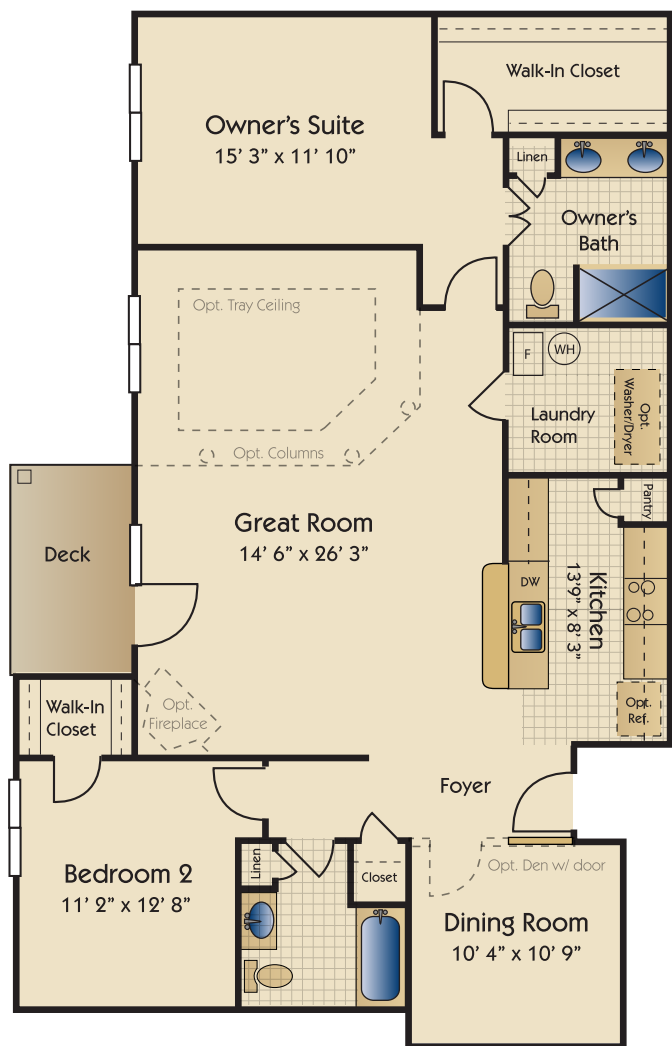


The Sheffield

Two Bedroom, Two Bath + Opt. Den/3rd Bedroom



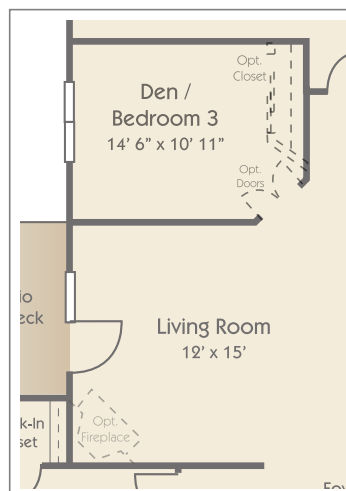
Included Features:

- Enormous Great Room with convenient Breakfast Bar and separate Dining Room
- 9' ceilings throughout
- Split bedroom design with Bedroom 2 convenient to Hall Bath
- Private Owner's Suite with french doors leading into the Owner's Bath, dual vanity, large walk-in closet, and step-in shower
- Walk-in closets in both bedrooms
- Large Laundry Room
- Spacious wood Deck with atrium doors

Available Design Options

- Fireplace in the Great Room
- Columns in the Great Room
- Tray ceiling in the Great Room
- Den or 3rd Bedroom with optional closet
- Den in lieu of Dining Room

Optional Den / 3rd Bedroom

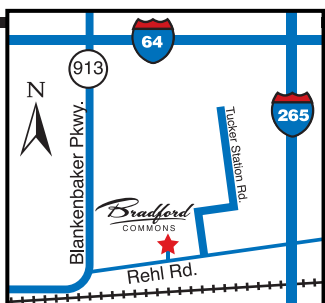


Outside Your Home

- Exterior maintenance provided
- Ten-year transferable structural warranty
- Professionally landscaped grounds
- Optional attached or detached garage
- Secure building entries

Your Community

- Low-maintenance living
- Pool with sun deck and pool chairs
- Fitness center



Bradford Commons

2706 Bradford Commons Drive #101 · Louisville, KY 40299

Tour our decorated model homes today!
Please call for specific directions and hours.

(502) 261-0999

