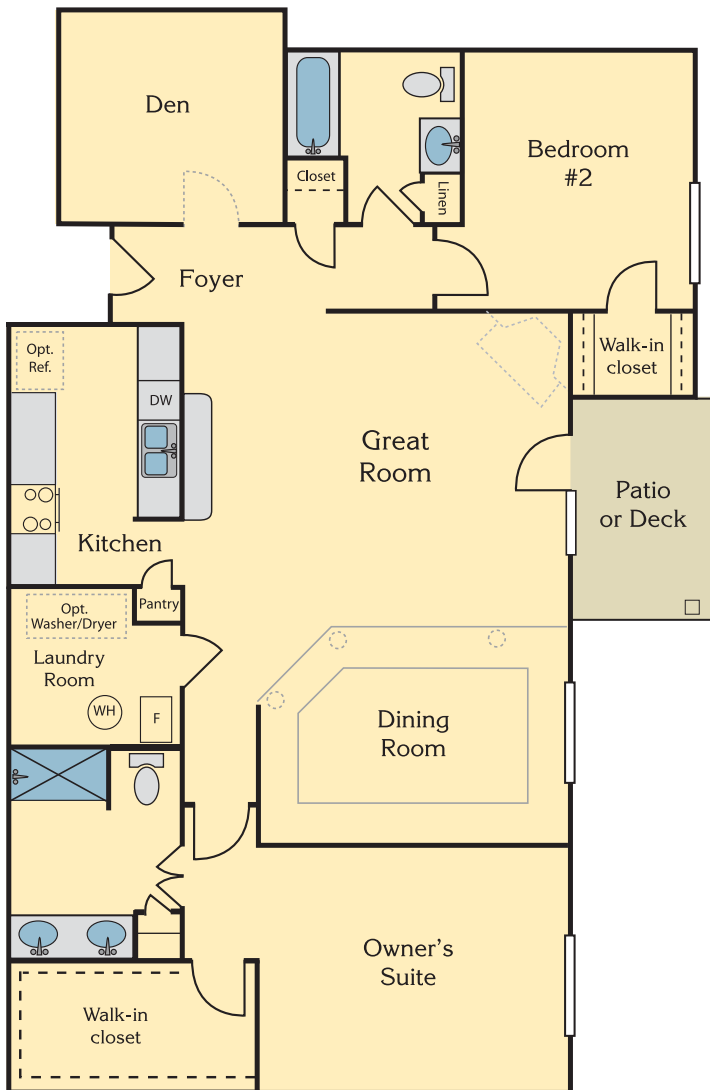


Hills invites you to enjoy all the benefits of homeownership- *without the hassles.*

*Bradford*  
COMMONS

## The Sheridan II

Two Bedroom, Two Bath + Den · 1,490 square feet



**Bring this page with you when you visit our decorated models!**

### Inside Your Home

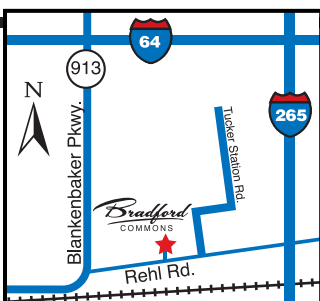
- Spacious and open living area
- Den ideal for office or hobby room
- Optional tray ceiling and columns in the dining room
- Large Owner's Suite with huge walk-in closet, step-in shower, dual vanities, and private toilet room
- Lots of kitchen cabinet space, including a pantry cabinet
- Breakfast bar ideal for entertaining
- Real laundry room
- Patio or wood deck

### Outside Your Home

- Exterior maintenance provided
- Ten-year transferable structural warranty
- Professionally landscaped grounds
- Optional attached or detached garage
- Secure building entries

### Your Community

- Low-maintenance living
- Pool with sun deck and pool chairs
- Fitness center



### Bradford Commons

2706 Bradford Commons Drive #101 · Louisville, KY 40299

Tour our decorated model homes today!  
Please call for specific directions and hours.

**(502) 261-0999**

